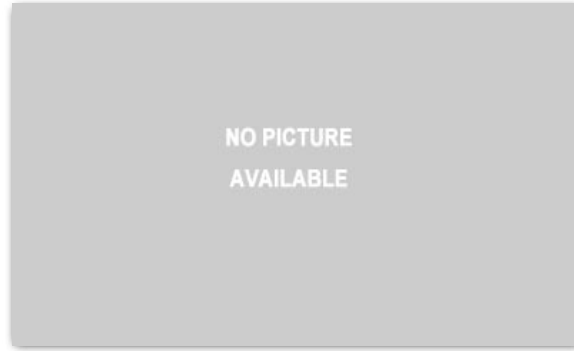


## 2005 SUZUKI ALTO ( LIFTBACK )



Country of Origin : Europe Ref ID : 14207C02C Computed On : Jun 17, 2020

## VEHICLE SPECIFICATIONS

VIN	MA3FFB21500319072	Model/Manufacture Year	2005
No of Seats	5	Production Period	551 -
Fuel Type	petrol	Date of Arrival	June, 2020
Engine Size	1061 mL	Age on Arrival	14 yr 6 mth

## COST, INSURANCE &amp; FREIGHT

MSRP	€6,500.00	Insurance	€32.85
50% Depreciation Allowed	€3,250.00	Cost, Ins and Freight (CIF)	€3,786.12
FOB	€3,250.00	Exchange Rate	6.3573
Freight	\$566.00 €503.28	<b>CIF in Ghana Cedis</b>	<b>24,069.50</b>
Cost and Freight	€3,753.28		

## DUTY, TAXES &amp; LEVIES

10% Import Duty	2,406.95	Certification	0.50
Special Levy	481.39	Processing Fee	0.00
VAT	3,475.4	Interest Charges	122.55
NHIL	661.92	Network Charges	82.65
GET Fund	661.92	NET VAT	12.40
ECOWAS	120.35	NET NHIL	2.7
EXIM	180.53	IRS	0.00
Exam Fee	240.70	AU Levy	48.14
Shippers Council	5.00	20% Overage Penalty	4,813.90

Duty and Taxes Payable	GHS 13,315.95	EUR 2,094.60
30% Ghana Gov. Discount	GHS 3,994.79	EUR 628.38
Final Duty and Taxes Payable	<b>GHS 9,321.17</b>	<b>EUR 1,466.22</b>

Provided by AUTOMASTERS | [www.vehicleduty.com](http://www.vehicleduty.com)

In case of disparity between Automasters and Ghana Customs, please contact us by mail or phone.

Phone : +233(0)274067315 (Ghana), +16077446005 (USA) | Email : [info@automastersgh.com](mailto:info@automastersgh.com)