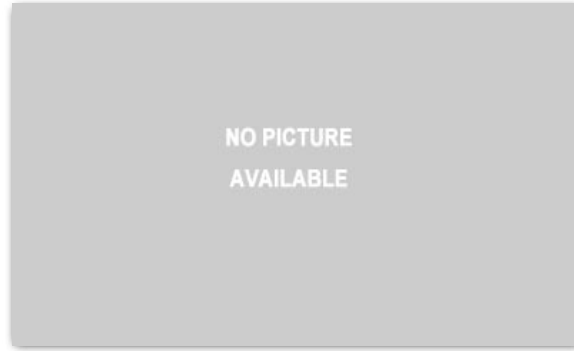


2004 MERCEDES-BENZ A 170 CDI (HATCHBACK)



Country of Origin : Europe Ref ID : 1354A2149 Computed On : Jun 08, 2020

VEHICLE SPECIFICATIONS

VIN	WDD1681091K001049	Model/Manufacture Year	2004
No of Seats	5	Production Period	490 -
Fuel Type	diesel	Date of Arrival	June, 2020
Engine Size	1689 mL	Age on Arrival	15 yr 6 mth

COST, INSURANCE & FREIGHT

MSRP	€17,616.00	Insurance	€82.65
50% Depreciation Allowed	€8,808.00	Cost, Ins and Freight (CIF)	€9,527.41
FOB	€8,808.00	Exchange Rate	6.2433
Freight	\$707.00 €636.77	CIF in Ghana Cedis	59,482.48
Cost and Freight	€9,444.77		

DUTY, TAXES & LEVIES

10% Import Duty	5,948.25	Certification	0.50
Special Levy	1,189.65	Processing Fee	0.00
VAT	8,587.79	Interest Charges	302.84
NHIL	1,635.77	Network Charges	219.97
GET Fund	1,635.77	NET VAT	32.100
ECOWAS	297.42	NET NHIL	5.50
EXIM	446.12	IRS	0.00
Exam Fee	594.83	AU Levy	118.97
Shippers Council	5.00	50% Overage Penalty	29,741.24

Duty and Taxes Payable	GHS 50,762.58	EUR 8,130.73
30% Ghana Gov. Discount	GHS 15,228.77	EUR 2,439.22
Final Duty and Taxes Payable	GHS 35,533.81	EUR 5,691.51

Provided by AUTOMASTERS | www.vehicleduty.com

In case of disparity between Automasters and Ghana Customs, please contact us by mail or phone.

Phone : +233(0)274067315 (Ghana), +16077446005 (USA) | Email : info@automastersgh.com